

SPECIFICATION



..... 3

..... 3

..... 3

..... 3

..... 4

..... 5

..... 7

..... 11

..... 11

..... 11

..... 11

..... 12

..... 12

..... 13

..... 13

..... 14

..... 15

..... 15

..... 17

..... 17



1. Description

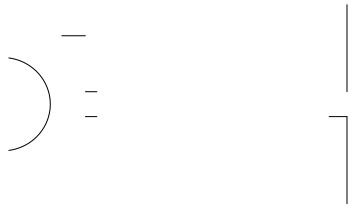
1.1 General Description

1.2 Features

1.3 Application



1.4 Package Dimension



1.5 Product Parameters

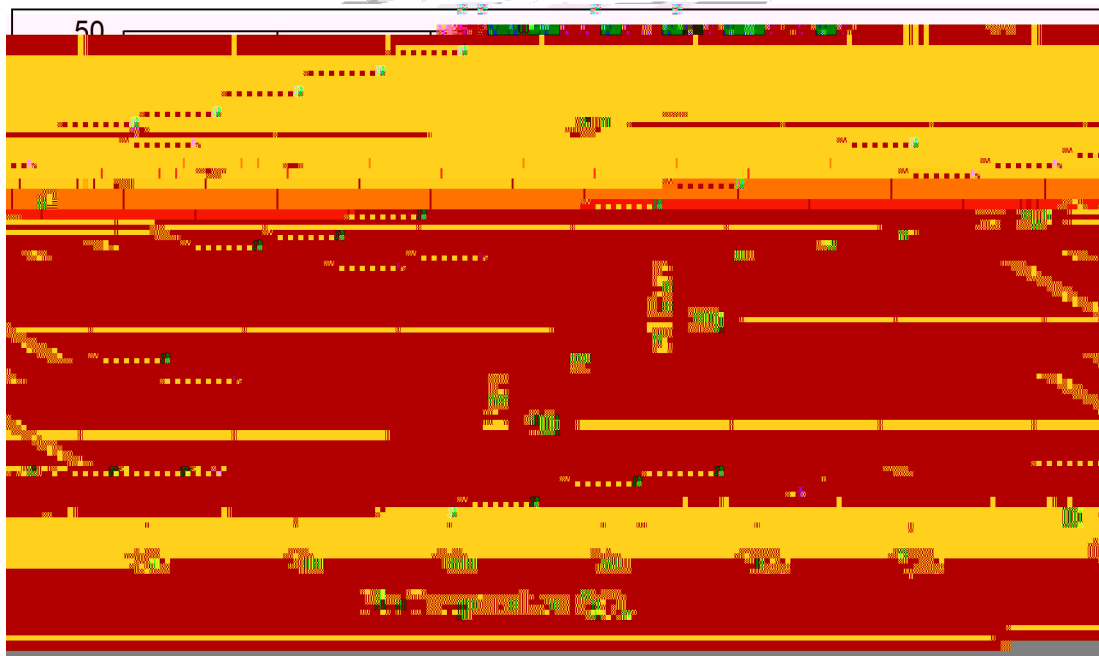


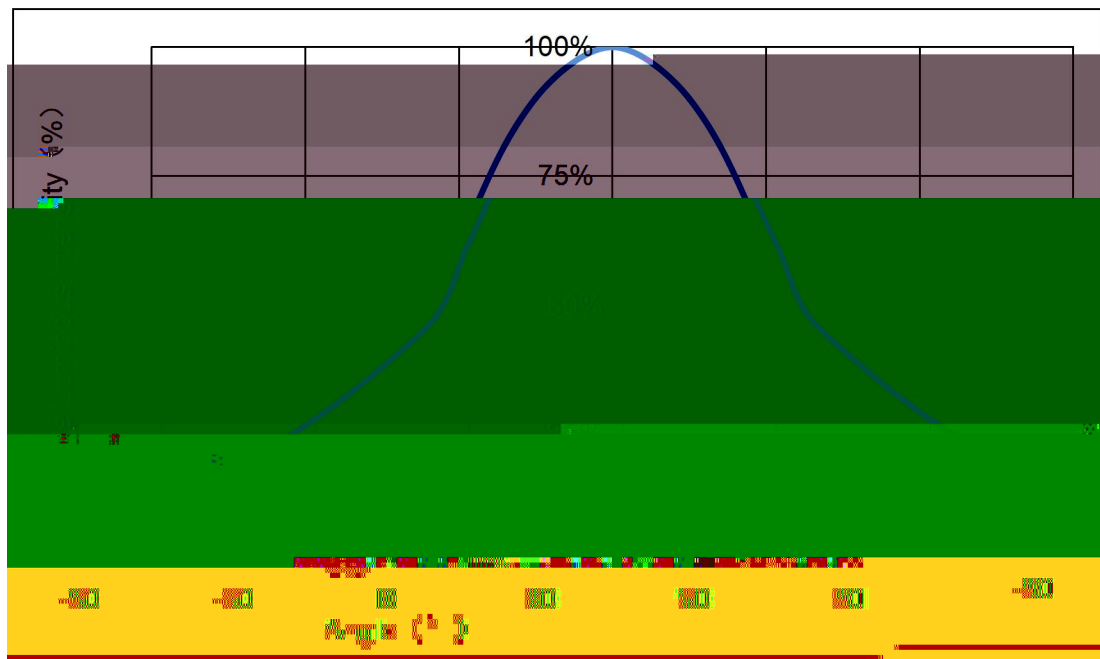


1.6 Typical Optical Characteristics Curves

) L

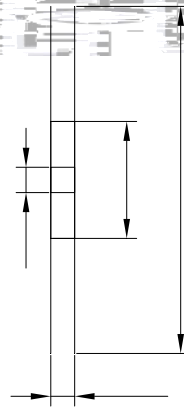
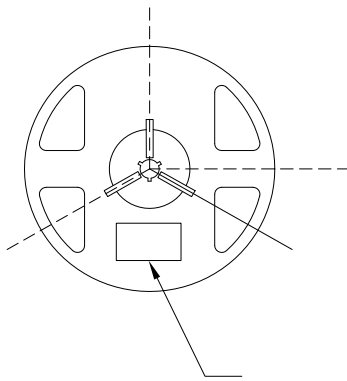
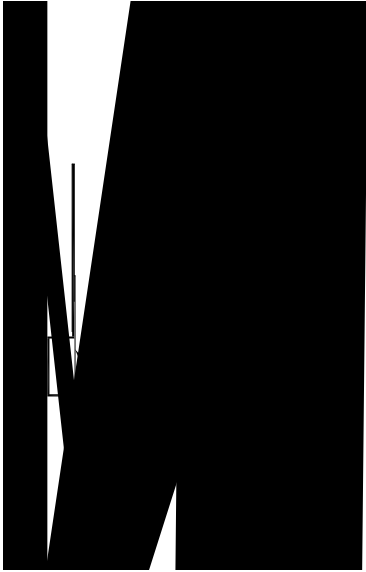






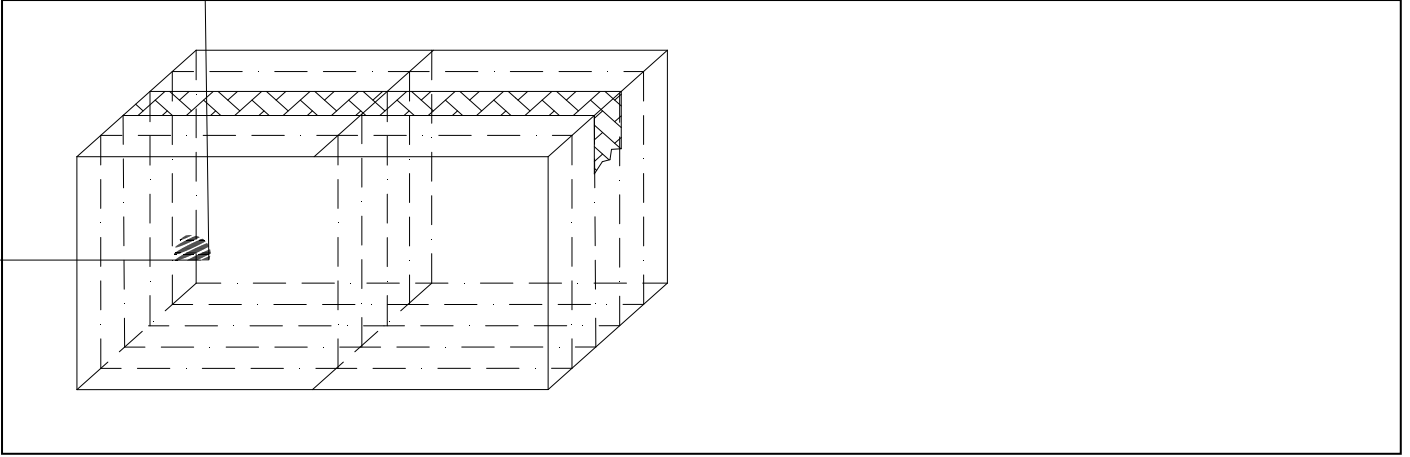
2. Packaging

2.1 Packaging Specification

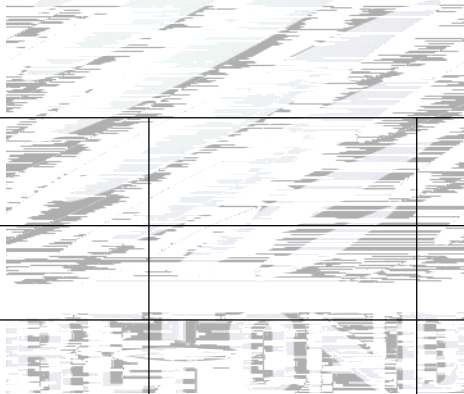




2.3 Cardboard Box



2.4 Reliability Test Items And Conditions

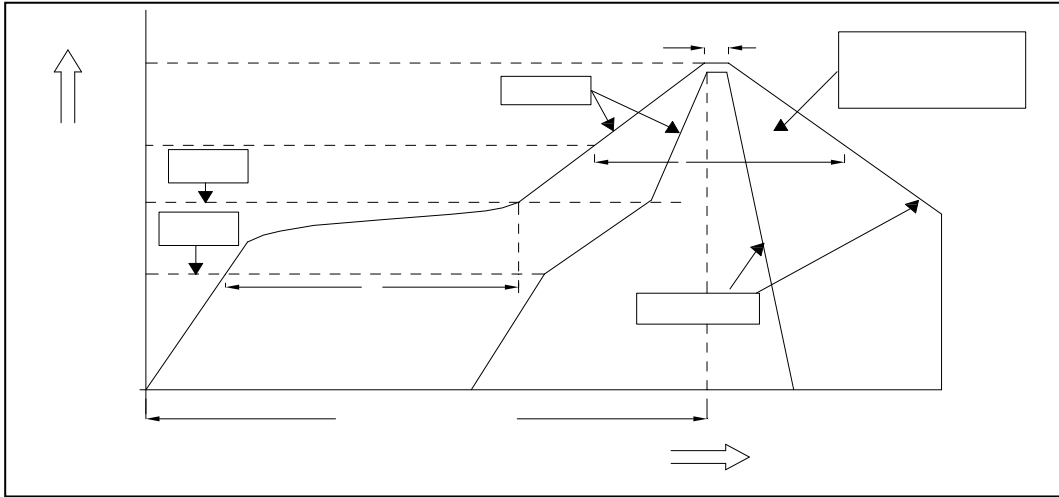


2.5 Criteria For Judging Damage



3. SMT Reflow Soldering Instructions SMT

3.1 SMT Reflow Soldering Instructions SMT





4. Handling Precautions

4.1 Handling Precautions







