



Report No.	LAB2110565-03
Report Version	V1
Total Pages	7

SHENZHEN REFOND OPTOELECTRONICS CO., LTD. LAB CENTER

Testing Report

Product No. RF-A1F30-W1DD-B1

Application _____

Testing Item _____

Testing Report

Product No. <u>RF-A1F30-W1DD-B1</u>	Batch No. <u>SC17-210800043</u>
Sample Status _____	Samples Quantity <u>10</u>
Principal _____	Tel <u>15755057052</u>
Subcontract or not _____	Samples Received Date <u>2021/10/30</u>

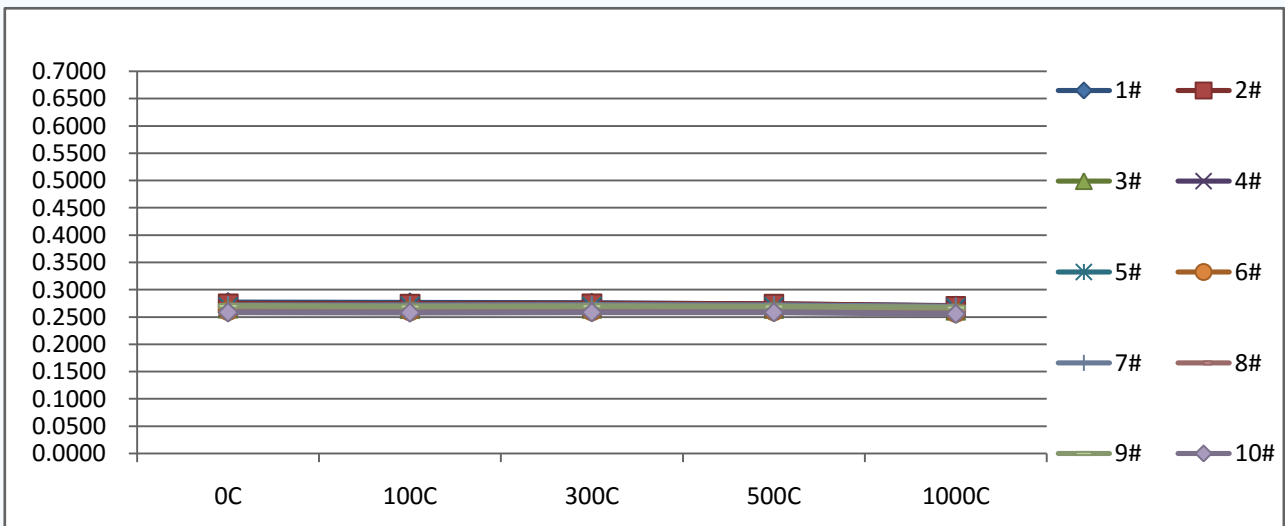
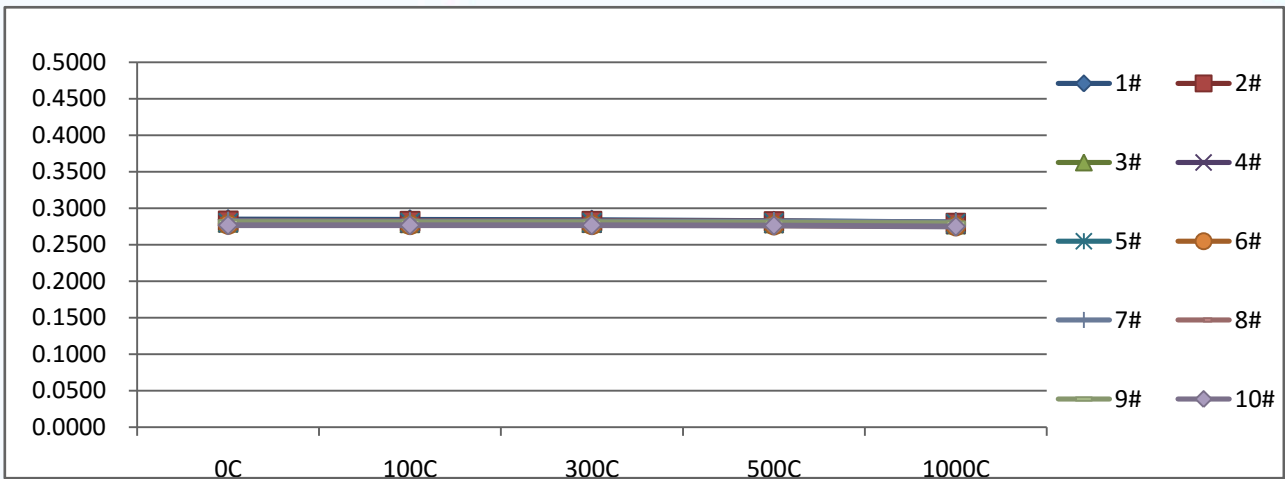
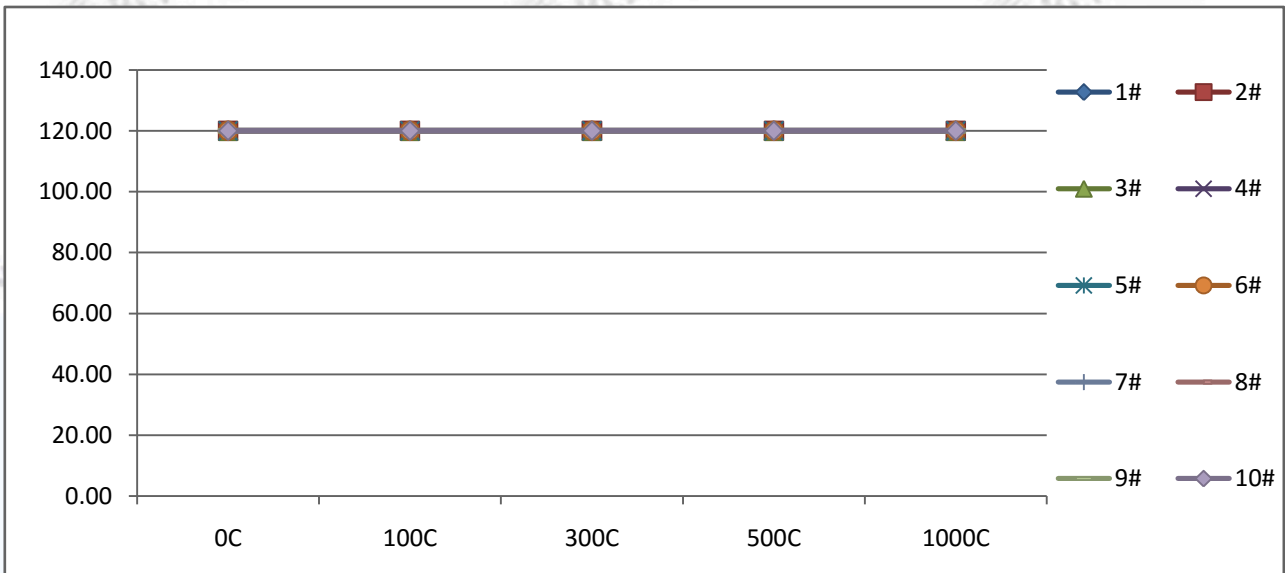
Test Specification: _____	N	GB/T 2423.22-2012
LED	CIE127	2007

Test Conclusion: [V] Pass [] NA [] Fail

Prepared By	<u>刘在权</u>	Title	Date
	_____	_____	<u>2022/1/6</u>
Approved By	<u>刘琪</u>	Title	Date
	_____	_____	<u>2022/1/6</u>

/Instructions:

1. Report is invalid if no signature for the captions "Prepared by" and "Approved by".
2. Without the written approval of the laboratory may not be copied part of this report.
3. Report is invalid if altered.
4. If no special notes in this report, the results are only related to the tested specimens.
5. This report shall not be reproduced without the written approval of laboratory and Refond owns the Copyright of all the reports.



	(lm)					Lumen Maintenance (%)				
	0C	100C	300C	500C	1000C	0C	100C	300C	500C	1000C
1#	45.44	44.79	43.36	45.01	43.57	100.00%	98.57%	95.42%	99.05%	95.88%
2#	44.74	44.27	44.17	44.86	42.80	100.00%	98.95%	98.73%	100.27%	95.66%
3#	43.42	43.48	42.74	43.39	41.44	100.00%	100.14%	98.43%	99.93%	95.44%
4#	41.36	40.37	41.11	41.29	40.17	100.00%	97.61%	99.40%	99.83%	97.12%
5#	45.51	45.36	43.37	45.80	45.14	100.00%	99.67%	95.30%	100.64%	99.19%
6#	43.48	43.72	42.97	43.53	42.25	100.00%	100.55%	98.83%	100.11%	97.17%
7#	42.47	43.43	42.99	42.73	42.41	100.00%	102.26%	101.22%	100.61%	99.86%
8#	41.10	41.73	41.51	41.10	40.08	100.00%	101.53%	101.00%	100.00%	97.52%
9#	43.37	43.23	42.29	43.03	42.76	100.00%	99.68%	97.51%	99.22%	98.59%
10#	42.55	42.75	41.63	42.73	41.00	100.00%	100.47%	97.84%	100.42%	96.36%
Min	41.10	40.37	41.11	41.10	40.08	100.00%	97.61%	95.30%	99.05%	95.44%
Max	45.51	45.36	44.17	45.80	45.14	100.00%	102.26%	101.22%	100.64%	99.86%
Avg	43.34	43.31	42.61	43.35	42.16	100.00%	99.94%	98.37%	100.01%	97.28%
Spec	NA					80%				

	VF (V)								
	0C	100C	300C	500C	1000C	100C	300C	500C	1000C
1#	3.026	3.029	3.004	3.011	3.002	0.003	-0.022	-0.015	-0.024
2#	3.012	3.013	2.996	2.996	2.988	0.001	-0.016	-0.016	-0.024
3#	3.032	3.031	3.014	3.015	3.011	-0.001	-0.018	-0.017	-0.021
4#	3.007	2.999	2.991	2.991	2.989	-0.008	-0.016	-0.016	-0.018
5#	3.057	3.048	3.036	3.039	3.038	-0.009	-0.021	-0.018	-0.019
6#	3.014	3.015	2.993	2.998	2.995	0.001	-0.021	-0.016	-0.019
7#	3.027	3.032	3.015	3.013	3.013	0.005	-0.012	-0.014	-0.014
8#	3.022	3.031	3.014	3.007	3.013	0.009	-0.008	-0.015	-0.009
9#	3.028	3.035	3.019	3.011	3.016	0.007	-0.009	-0.017	-0.012
10#	3.054	3.044	3.028	3.028	3.029	-0.010	-0.026	-0.026	-0.025
Min	3.007	2.999	2.991	2.991	2.988	-0.010	-0.026	-0.026	-0.025
Max	3.057	3.048	3.036	3.039	3.038	0.009	-0.008	-0.014	-0.009
Avg	3.028	3.028	3.011	3.011	3.009	0.000	-0.017	-0.017	-0.019
Spec	NA					-0.2			

	IF (mA)				
	0C	100C	300C	500C	1000C
1#	120.00	120.00	120.00	120.00	120.00
2#	120.00	120.00	120.00	120.00	120.00
3#	120.00	120.00	120.00	120.00	120.00
4#	120.00	120.00	120.00	120.00	120.00
5#	120.00	120.00	120.00	120.00	120.00
6#	120.00	120.00	120.00	120.00	120.00
7#	120.00	120.00	120.00	120.00	120.00
8#	120.00	120.00	120.00	120.00	120.00
9#	120.00	120.00	120.00	120.00	120.00
10#	120.00	120.00	120.00	120.00	120.00
Min	120.00	120.00	120.00	120.00	120.00
Max	120.00	120.00	120.00	120.00	120.00
Avg	120.00	120.00	120.00	120.00	120.00
Spec	NA				

	x								
	0C	100C	300C	500C	1000C	100C	300C	500C	1000C
1#	0.2846	0.2841	0.2836	0.2825	0.2809	-0.0005	-0.0010	#####	-0.0037
2#	0.2827	0.2823	0.2825	0.2821	0.2800	-0.0004	-0.0002	#####	-0.0027
3#	0.2805	0.2800	0.2801	0.2797	0.2782	-0.0005	-0.0004	#####	-0.0023
4#	0.2798	0.2795	0.2794	0.2789	0.2779	-0.0003	-0.0004	#####	-0.0019
5#	0.2804	0.2808	0.2805	0.2801	0.2793	0.0004	0.0001	#####	-0.0011
6#	0.2776	0.2773	0.2772	0.2769	0.2756	-0.0003	-0.0004	#####	-0.0020
7#	0.2825	0.2821	0.2822	0.2819	0.2809	-0.0004	-0.0003	#####	-0.0016
8#	0.2795	0.2792	0.2792	0.2790	0.2780	-0.0003	-0.0003	#####	-0.0015
9#	0.2812	0.2808	0.2809	0.2803	0.2792	-0.0004	-0.0003	#####	-0.0020
10#	0.2769	0.2767	0.2769	0.2765	0.2751	-0.0002	0.0000	#####	-0.0018
Min	0.2769	0.2767	0.2769	0.2765	0.2751	-0.0005	-0.0010	#####	-0.0037
Max	0.2846	0.2841	0.2836	0.2825	0.2809	0.0004	0.0001	#####	-0.0011
Avg	0.2806	0.2803	0.2803	0.2798	0.2785	-0.0003	-0.0003	#####	-0.0021
Spec	NA					-0.02			

	y								
	0C	100C	300C	500C	1000C	100C	300C	500C	1000C
1#	0.2770	0.2762	0.2757	0.2736	0.2705	-0.0008	-0.0013	#####	-0.0065
2#	0.2746	0.2740	0.2745	0.2737	0.2697	-0.0006	-0.0001	#####	-0.0049
3#	0.2661	0.2652	0.2657	0.2654	0.2624	-0.0009	-0.0004	#####	-0.0037
4#	0.2682	0.2680	0.2677	0.2676	0.2652	-0.0002	-0.0005	#####	-0.0030
5#	0.2695	0.2704	0.2697	0.2695	0.2676	0.0009	0.0002	0.0000	-0.0019
6#	0.2616	0.2613	0.2611	0.2611	0.2582	-0.0003	-0.0005	#####	-0.0034
7#	0.2716	0.2716	0.2720	0.2714	0.2695	0.0000	0.0004	#####	-0.0021
8#	0.2642	0.2639	0.2642	0.2642	0.2622	-0.0003	0.0000	0.0000	-0.0020
9#	0.2702	0.2695	0.2700	0.2695	0.2672	-0.0007	-0.0002	#####	-0.0030
10#	0.2584	0.2583	0.2588	0.2586	0.2558	-0.0001	0.0004	0.0002	-0.0026
Min	0.2584	0.2583	0.2588	0.2586	0.2558	-0.0009	-0.0013	#####	-0.0065
Max	0.2770	0.2762	0.2757	0.2737	0.2705	0.0009	0.0004	0.0002	-0.0019
Avg	0.2681	0.2678	0.2679	0.2675	0.2648	-0.0003	-0.0002	#####	-0.0033
Spec	NA					-0.02			

